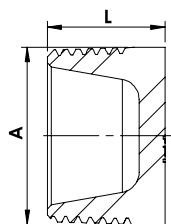


ART. 34

Tappo vite maschio.
Yellow brass M cap.



- R E -

Fig. 290

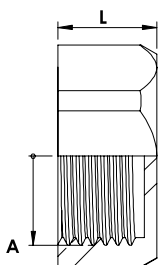
Codice - Code	Ø A	L mm	Conf. - Pack		€ Cad. - € each
1185756	1/4"	14	10	1000	0,54
1185757	3/8"	15	10	750	0,65
1185758	1/2"	19,5	10	650	0,74
1185759	3/4"	17,3	10	400	1,28
1185760	1"	20,2	10	230	2,35
1185761	1"1/4	35,6	1	80	4,16
1185762	1"1/2	25,8	1	80	4,75
1185763	2"	33,6	1	60	8,62

ART. 36

Tappo vite femmina.
Yellow brass F cap.



- R E -

Fig. 300

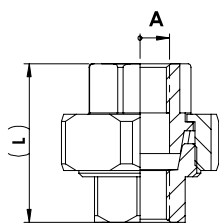
Codice - Code	Ø A	L mm	Conf. - Pack		€ Cad. - € each
1186556	1/4"	10,8	10	1000	0,65
1186557	3/8"	9,7	10	600	0,68
1186558	1/2"	10,2	10	600	0,77
1186559	3/4"	12,5	10	350	1,08
1186560	1"	13,0	10	200	2,00
1186561	1"1/4	15,9	1	150	2,70
1186562	1"1/2	15,6	1	100	3,70
1186563	2"	20	1	60	6,85

ART. 38

Bocchettone diritto F.F. sede conica.
Yellow brass F.F. conic pipe union.



- R E -

Fig. 340
PER IMPIEGHI SPECIALI:
NAVALE E GAS

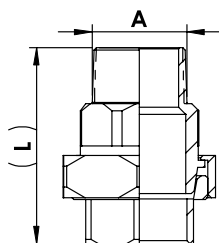
Codice - Code	Ø	L mm	Conf. - Pack		€ Cad. - € each
1185158	1/2"	45,2	10	70	8,62
1185159	3/4"	46,3	10	40	11,60
1185160	1"	50,4	10	40	14,00
1185161	1"1/4	58,5	1	28	18,50
1185162	1"1/2	67,5	1	15	24,40
1185163	2"	68,1	1	12	34,50
1185164	2"1/2		1	1	147,15

ART. 40

Bocchettone diritto M.F. sede conica.
Yellow brass M.F. conic pipe union.



- R E -

Fig. 341
PER IMPIEGHI SPECIALI:
NAVALE E GAS

Codice - Code	Ø A	L mm	Conf. - Pack		€ Cad. - € each
1185108	1/2"	62,7	10	80	9,50
1185109	3/4"	67,1	10	50	12,20
1185110	1"	71,5	10	30	15,16
1185111	1"1/4	83,8	1	22	21,40
1185112	1"1/2	89,9	1	16	27,65
1185113	2"	95,6	1	10	38,65
1185114	2" 1/2		1	1	163,20