

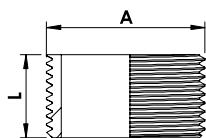
ART. 42

Tuttavite.
Yellow brass nipple.



- R E -

Fig. 531



Codice - Code	Ø A	L mm	Conf. - Pack		€ Cad. - € each
1185873	1/2"	30,0	10	350	1,50
1185874	3/4"	30,0	10	250	1,80
1185875	1"	33,0	10	100	2,70
1185876	1"1/4	40,0	1	70	4,20
1185877	1"1/2	45,0	1	70	6,55
1185878	2"	50,0	1	40	10,12

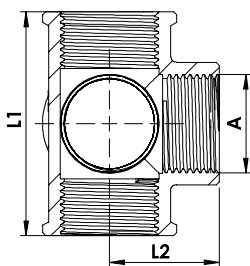
ART. 44

Distribuzione a 4 vie.
Yellow brass reducing coupling.



- R E -

Fig. 223



Codice - Code	Ø A	L1 mm	L2 mm	Conf. - Pack		€ Cad. - € each
1186608	1/2"	54,0	27,0	10	60	8,35
1186609	3/4"	65,0	34,1	10	40	11,00
1186610	1"	75,5	37,0	5	25	21,40
1186611	1"1/4	88,0	44,0	1	15	24,40
1186612	1"1/2	97,0	50,5	1	10	33,30

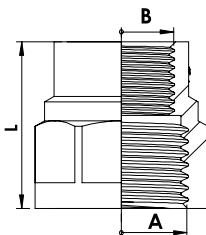
ART. 46

Manicotto ridotto F.F.
Yellow brass reducing coupling.



- R E -

Fig. 240



Codice - Code	Ø Ax B	L mm	Conf. - Pack		€ Cad. - € each
1185558	1/2"x3/8"	27,0	10	340	1,52
1185559	3/4"x1/2"	30,2	10	160	2,20
1185560	1"x1/2"	31,2	10	120	3,00
1185561	1"x3/4"	32,0	10	90	3,15
1185562	1"1/4x1"	38,9	1	60	5,05
1185564	1"1/2x1"	37,2	1	40	7,75
1185563	1"1/2x1"1/4	39,5	1	40	8,95
1185565	2"x1"1/4	37,0	1	20	12,20
1185566	2"x1"1/2	50,0	1	40	11,60

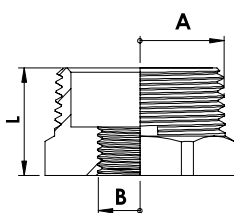
ART. 48

Riduzione M.F.
Yellow brass reducer.



- R E -

Fig. 241



Codice - Code	Ø Ax B	L mm	Conf. - Pack		€ Cad. - € each
1186453	1/4"x1/8"	12,4	10	600	0,54
1186469	3/8"x1/4"	15,1	10	600	0,77
1186455	1/2"x1/4"	17,2	10	600	0,98
1186457	1/2"x3/8"	16,6	10	600	0,74
1186454	3/4"x3/8"	17,6	10	600	1,95
1186458	3/4"x1/2"	18,7	10	350	1,18
1186448	1"x3/8"	10	150		3,65
1186463	1"x1/2"	20,5	10	180	2,42
1186459	1"x3/4"	20,5	10	180	1,85
1186471	1"1/4x1/2"	23,4	1	100	4,46
1186450	1"1/4x3/4"	24,8	1	100	4,30
1186460	1"1/4x1"	23,8	1	100	3,75
1186468	1"1/2x1/2"	23,9	1	130	8,35
1186451	1"1/2x3/4"	27,4	1	80	6,60
1186470	1"1/2x1"	24,8	1	90	5,05
1186461	1"1/2x1"1/4	26,8	1	80	3,42
1186464	2"x1"	31,1	1	50	10,40
1186465	2"x1"1/4	30,0	1	50	8,50
1186462	2"x1"1/2	30,0	1	50	7,15
1186473	2"1/2x2"	40,0	1	25	17,85
1186474	3"x2"	42,5	1	8	29,75
1186480	4"x3"	50,7	1	8	48,20