

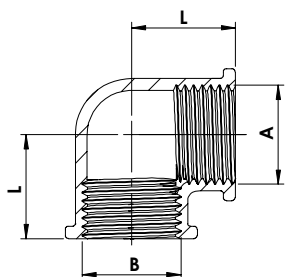
ART. 2

Gomito a 90° F.F.
F.F. yellow brass elbow joint.



- R E -

Fig. 90



Codice - Code	Ø AxB	L mm	Conf. - Pack		€ Cad. - € each
1185056	1/4"	17,0	10	200	1,84
1185057	3/8"	21,0	10	200	2,02
1185058	1/2"	22,0	10	140	2,02
1185059	3/4"	24,8	10	100	3,50
1185060	1"	31,8	10	50	5,00
1185061	1"1/4	42,8	1	30	8,95
1185062	1"1/2	46,4	1	26	12,80
1185063	2"	55,5	1	14	20,50
1185064	2"1/2	68,2	1	5	38,65
1185065	3"	73,0	1	2	53,52
1185067	4"	95,7	1	1	116,00

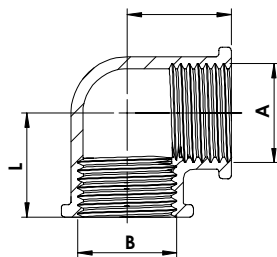
ART. 4

Gomito F.F. per impieghi speciali:
navale e gas.
F.F. yellow brass elbow joint.



- R E -

Fig. 90
PER IMPIEGHI SPECIALI:
NAVALE E GAS



Codice - Code	Ø AxB	L mm	Conf. - Pack		€ Cad. - € each
1185092	1/2"	26,5	10	140	2,90
1185093	3/4"	47,0	10	80	4,00
1185094	1"	42,0	10	50	8,65

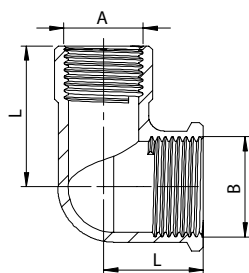
ART. 6

Gomito F.F. ridotto.
F.F. yellow brass reduced elbow joint.



- R E -

Fig. 90R



Codice - Code	Ø AxB	L mm	Conf. - Pack		€ Cad. - € each
1185070	1/2"x3/4"	27,5	10	80	5,80
1185071	1/2"x1"	33,0	10	45	9,80
1185072	3/4"x1"	33,0	10	45	8,65

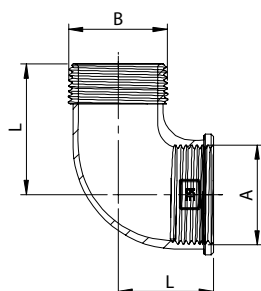
ART. 8

Gomito a 90° M.F.
M.F. yellow brass elbow joint.



- R E -

Fig. 92



Codice - Code	Ø AxB	L1 mm	L2 mm	Conf. - Pack		€ Cad. - € each
1185256	1/4"	20,0	25,0	10	200	2,10
1185257	3/8"	21,0	28,0	10	200	2,10
1185258	1/2"	25,0	30,1	10	170	2,18
1185259	3/4"	26,8	34,2	10	100	3,15
1185260	1"	38,6	47,0	10	50	5,80
1185261	1"1/4	40,3	55,2	10	35	9,50
1185262	1"1/2	45,3	65,4	1	26	14,60
1185263	2"	53,3	66,5	1	13	23,20
1185264	2"1/2	68,2	85,2	1	4	55,90
1185265	3"	73,0	90,5	1	4	63,30
1185267	4"	95,7	105,0	1	1	133,80